

Specification and technical data

UNIVERSAL MACHINE for production of corrugated slotted boxes and boards



EASYMATIC 18

CORRUGATED BOARD SPECIFICATION

Corrugated board	single wall, double wall	
Thickness range	2 - 10	mm
Specific density range	300 - 1,200	g/m ²

BASIC TECHNICAL DATA

Max. width of board	1,800	mm
Min. width of board	200	mm
Max. length of board	unlimited	
Min. length of board	500	mm
Productivity:		
Single production	250 - 500	pcs/hour
Multiproduction	up 1,600	pcs/hour
Dimensions and weight of machine:		
length	1,900	mm
width	2,180	mm
height	1,610	mm
weight	1,550	kg
Power supply	3 x 400 / 50	V/Hz
Connected load	5	kW
Max. instantenous connected load	3	kW
Air pressure	0.8 - 1	MPa (8 - 10 Bar)
Air consumption	10	l/min

COMPONENTS

Servomotors	LENZE Germany
Gear box	LENZE Germany
Pneumatic elements	FESTO Austria
Electronics	LENZE Germany

CHARACTERIZATION

The universal machine for production of Corrugated Regular Slotted Boxes and cut sizes EASYMATIC 23 is designed for professional and effective manufacture of slotted containers (corrugated cardboard regular slotted containers or trays). The machine can also makes partitions or just cut and create a board both crosswise and lengthwise. The production basic slotted boards (especially FEFCO 02., FEFCO 03.. line etc.) is possible from single-wall and double corrugated boards. The machine makes it possible to processing of triple-wall corrugated board.

SPECIFICATION

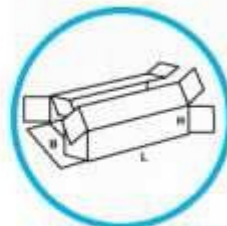
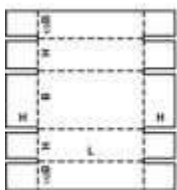
On machine it can perform following operations:

- slotting and transversal creasing
- longitudinal creasing
- longitudinal slitting
- multi production across

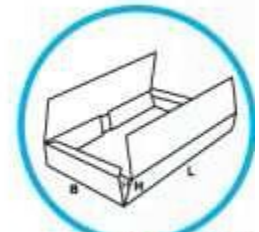
Dimensions of the boxes are programmed through an intuitive touch screen. According to the entered parameters, the machine automatically performs in longitudinal direction the transversal slotting and creasing. The positions of slotting and creasing knives, creasing and cutting wheel in transversal direction are easy to adjust manually. The machine is quick and easy to set up and most perfect for runs 10 - 5 000 boxes long.

FEFCO codes - EASYMATIC 23 - one pass:

0200*), 0201*), 0202*), 0203*), 0205*), 0208*), 0209*), 0230, 0231, 0300, 0301, 0310, 0312*), 0313*), 0320*), 0331, 0404, 0405, 0409, 0411, 0412*), 0413*), 0452, 0453, 0454, 0455, 0501, 0502, 0503, 0504, 0505, 0507, 0509, 0621*), row 09..



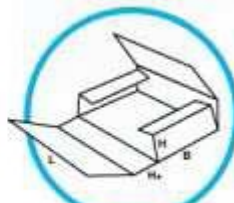
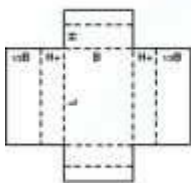
FEFCO_0411



FEFCO_0412

FEFCO codes - EASYMATIC 23 - two passes:

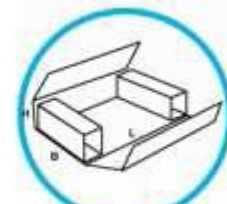
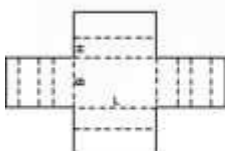
0204*), 0206*), 0214*), 0228*), 0229*), 0302, 0306, 0325*), 0400, 0401, 0402, 0403, 0410, 0441, 0456, 0458



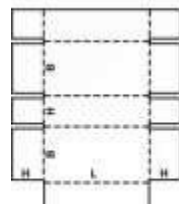
FEFCO_0401



FEFCO_0402



FEFCO_0403



FEFCO_0410

*) glue flap has to be teared off manually

MAIN ADVANTAGES OF EASYMATIC 18

1. Versatility of the machine, short set up time when processing many different orders (3 - 5 minutes) which allows to produce small quantity orders.
2. Production of large size boxes (max. width of board – 1,8 m, max. length - unlimited).
3. Favorable price/quality ratio
4. No special maintenance requirements

BASIC EQUIPMENT OF EASYMATIC 18

1. Basic module
2. Transversal slotting knives (thickness 6 or 8 mm):
 - 98 mm - 6 pairs
3. Transversal creasing knives (thickness 6 or 8 mm):
 - 140 mm - 4 pcs
 - 100 mm - 6 pcs
 - 80 mm - 4 pcs
 - 60 mm - 3 pcs
 - 50 mm - 3 pcs
 - 40 mm - 3 pcs
4. Longitudinal creasing wheels - 2 pairs
5. Longitudinal slitting wheels incl. knives - 2 pairs

OPTIONS

1. Options for triple production
 - transversal slotting knives (thickness 6 or 8 mm):
 - 78 mm - 2 pairs
 - 58 mm - 2 pairs
 - 40 mm - 1 pair
 - longitudinal creasing wheels - 4 pairs
 - longitudinal slitting wheels incl. knives - 2 pairs
2. Pneumatical clamping of slotting and creasing knives
3. Servodrives (increase of productivity about 20-30%)